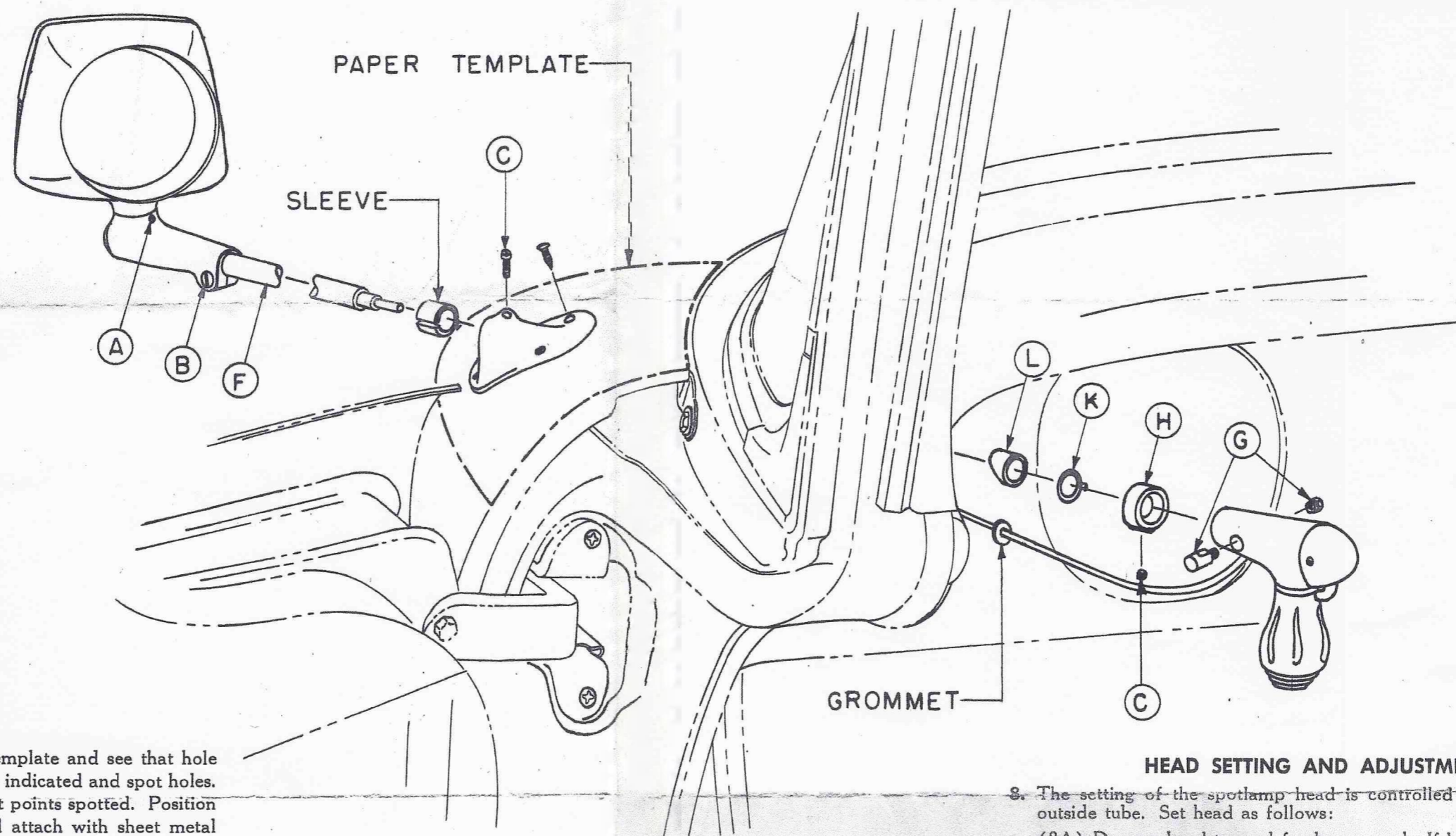
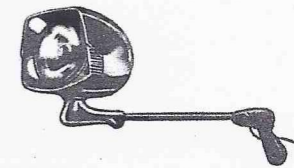


INSTRUCTIONS FOR INSTALLING UNITY SAFETYLIGHTS

SAFETYLIGHTS MAY BE MOUNTED ON EITHER LEFT OR RIGHT HAND SIDE OF CAR. CHECK THE BRACKET SET FOR VEHICLE ON WHICH LIGHT IS TO BE INSTALLED. UNLESS CARTON IS MARKED "RIGHT HAND" THE BRACKET WILL BE FOR A LEFT HAND INSTALLATION.



1. Select proper template. Lay bracket over template and see that hole centers are correct. Lay template on body as indicated and spot holes. Drill $\frac{1}{8}$ " holes through metal face of body at points spotted. Position the outside bracket over the $\frac{1}{8}$ " holes, and attach with sheet metal screw furnished.
2. Insert drill bushing into bracket and tighten the clamp screw to grip drill bushing. Insert $\frac{1}{2}$ " drill through bushing and drill through body. **IMPORTANT**—Hold drill level. Do not weave to side and do not ride drill up or down. The drill bushing predetermines the angle, and if drill is held level, the hole will come through at the proper spot.
3. Before removing the handle tighten the friction screw (B). That will hold the outer tube while removing light. Remove nut and wedge (G) and remove the handle from shaft. Insert the light through the outside bracket until the head housing is flush against the bracket. The floating sleeve on shaft of light fills up the recess in the bracket.
4. Slip rubber bushing (L) over shaft of light. Slip wire clip (K) over shaft with points against bushing. Place inside bracket (H) and tighten set screw (C).

5. Before replacing handle, tighten bracket clamping screws (C) to hold light assembly while replacing the handle, being sure that the head housing is pushed flush against the outside bracket. Replace handle on shaft (for either left or right hand installation) being sure to align key in gear with slot in tubing. **NOTE**—Key in handle housing must line up also with notch in outside tubing. Be sure that the flat space on shaft for wedge (G) can be seen through hole in handle. Insert wedge, draw up tight enough to prevent play, but not to crush tubing.
6. Drill $\frac{1}{4}$ " hole, approximately $\frac{1}{2}$ " from inside bracket and insert grommet.
7. Lay wire in clip and close clip around wire. Insert wire through grommet and connect to battery terminal of ammeter, or switch block. Always connect independent of other lights.

HEAD SETTING AND ADJUSTMENTS

8. The setting of the spotlamp head is controlled by the stops in the outside tube. Set head as follows:
 (8A) Depress head toward fender or cowl. If head does not go forward completely, loosen outside and inside clamping screws. (This permits outside tube to rotate). Then depress until head is approx. 1" from fender. Tighten clamping screws, outside tube is locked permanently, and light is set between stops.
 (8B) If head hits cowl or fender before meeting stop, loosen outside and inside clamping screws. Tilt backwards until head touches body. Then depress forward until head is approx. 1" from fender. Tighten clamping screws and outer tube is locked permanently, and light is set.
9. Set screw (A) adjusts the horizontal or head friction, and screw (B) adjusts the vertical or shaft friction. Friction should be sufficient to hold lamp in position against wind, but free enough for easy operation.

UNITY MANUFACTURING COMPANY
 2909 INDIANA AVENUE
 CHICAGO 16, ILLINOIS